

2. Characteristics of Korean Culture

In the Workplace



1. Hierarchy in the Workplace

- ◆ Leadership
- ◆ Roles and expectations

2. Work Ethic = Diligence

- ◆ Willingness to work hard

3. Korea's famed phrase: "Pali-pali"

- ◆ means hurry!

Do's when working with Koreans



01

If someone senior to you enters a room, it is polite for you to **stand up.**



02

Pass an object or document with **both hands** to a senior person. (Business Card)

Do's when working with Koreans



03

Show **politeness**
if your Korean
counterpart looks
significantly older.



04

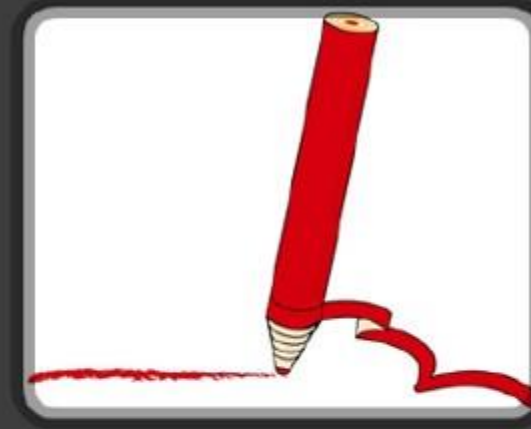
Ask for regular
meetings, and
frequent
communication.

Don'ts when working with Koreans



01

Many Koreans don't feel comfortable with **intense eye contact**.



02

Don't write someone's name or sign a contract in **red**.

Don'ts when working with Koreans



03

Don't beckon **a**
senior with an
index finger gesture.



04

Don't place your
feet up
on a table or desk.